

Driving Behavior

[HTTPS://DRIVE.GOOGLE.COM/FILE/D/1oYRKAPSAN49DKP9-Z6DY_YCBQ5MGZI2C/VIEW?USP=SHARING](https://drive.google.com/file/d/1oYRKAPSAN49DKP9-Z6DY_YCBQ5MGZI2C/view?usp=sharing)

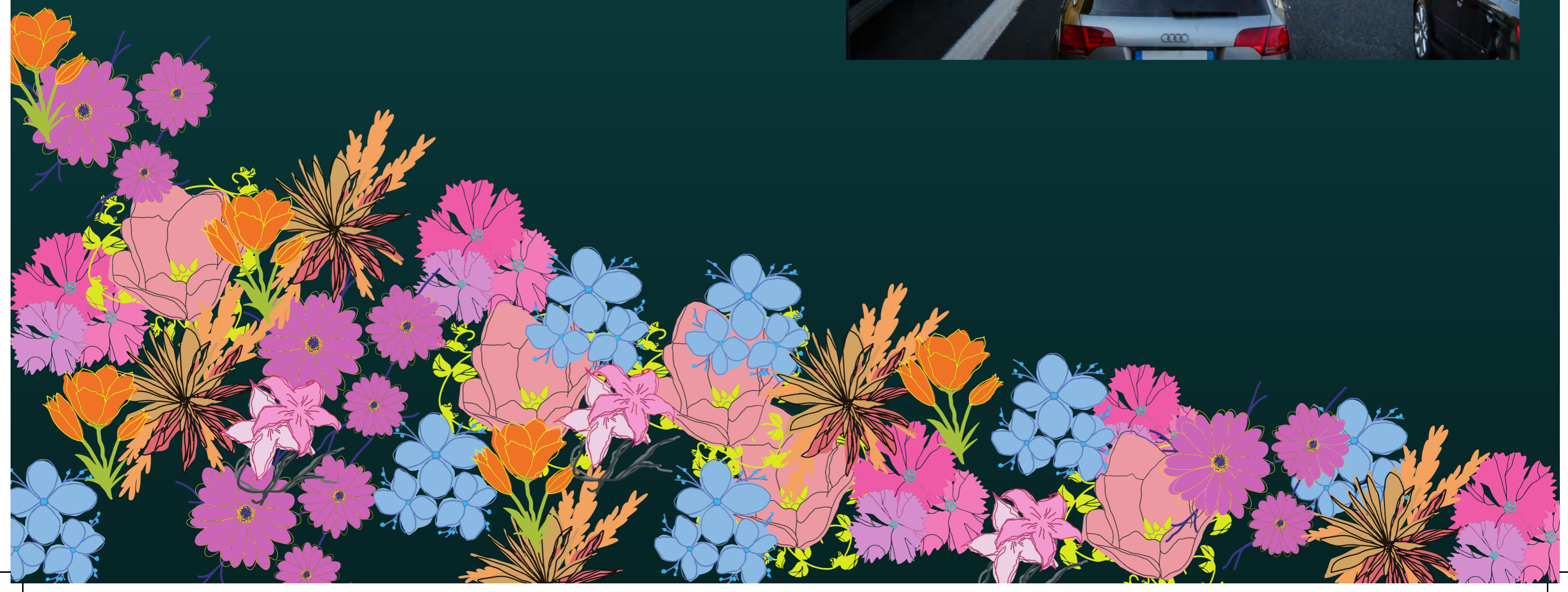
HOW TO BE CAREFUL ON THE ROAD


{Do not use the mobile phone while driving or crossing the street on foot}



{Always wear a helmet and seat belt}

{In driving we must not rush and become selfish}





ROAD SAFETY
BE CAREFUL

WEAR A SEAT BELT

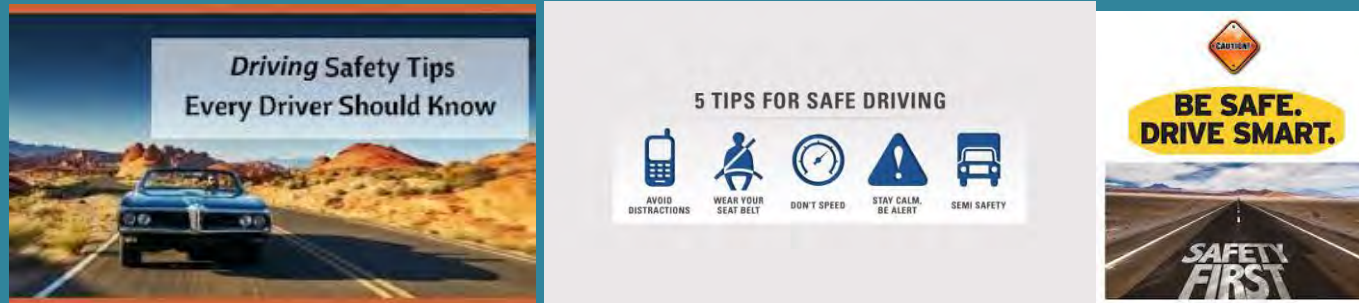
**FOLLOW THE ROAD
TRAFFIC CODE**

**PEDESTRIANTS CROSS
THE STREET CAREFULLY**

DON'T DRINK ALCOHOL

**RESPECT THE OTHER
DRIVERS**

ΚΩΝΣΤΑΝΤΙΝΟΣ ΠΟΛΙΤΗΣ - SAFE DRIVING POSTER



❖ NEVER DRINK ALCOHOL AND DRIVE.

❖ ALWAYS WEAR YOUR SEATBELTS.

❖ DON'T USE YOUR MOBILE PHONE OR ANY OTHER ELECTRONIC DEVICE WHILE DRIVING.

❖ SLOW DOWN. SPEEDING GIVES YOU LESS TIME TO REACT.

❖ OBEY ALL ROAD SIGNS AND SPEED LIMIT.

❖ KEEP DISTANCE FROM THE CAR IN FRONT OF YOU.

❖ KEEP 100% OF YOUR ATTENTION ON DRIVING AT ALL TIMES.



CATEGORIES OF VICTIMS ON ROADS



- KIDS
- ELDERLY
- DISABLED
- PETS
- PEDESTRIANS

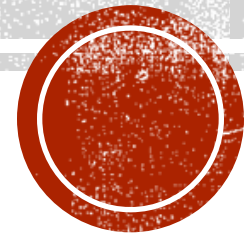
- Firstly , many car drivers drive at high speeds in the streets,which sometimes drives them to their deaths.
- Many drivers were passing by with a red light, hitting pedestrians and pets.



ENGLISH EXERCISE

BY: MARIOS XRONIS HELP BY: AGGELOS XIROMERITIS

A PROJECT FOR DRIVING



THE NEW DRIVERS

- For new drivers who are accustomed to driving smaller vehicles, it may take some time for them to get used to the braking distance of large commercial vehicles.
- It is up to fleets and safety managers to ensure that drivers go through a complete driver training program that talks about these differences in detail.
- A road-facing dash cam can also be installed to ensure that drivers are keeping a safe braking distance from other vehicles

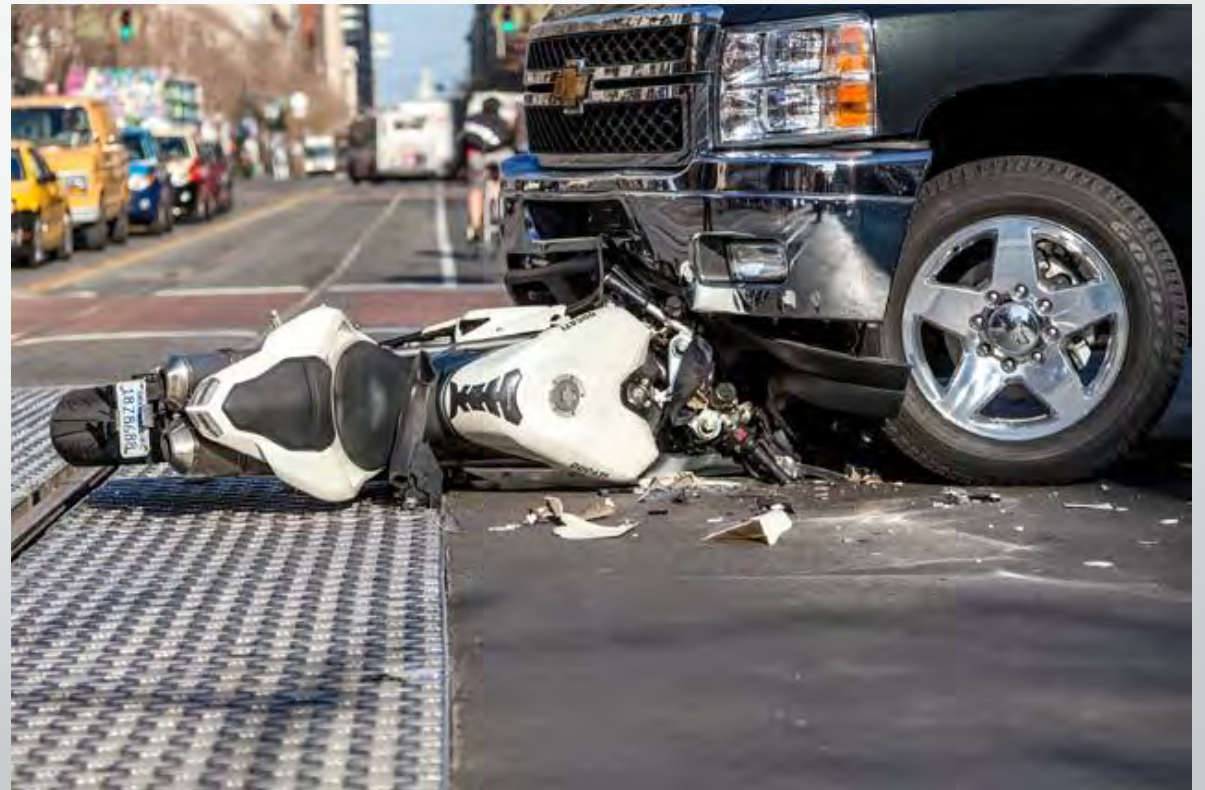
DANGEROUS DRIVERS



TRUCKS

- ◆ 1. Don't cut in front of trucks approaching traffic lights or out on the highway. A loaded B-Double can weigh 40 to 50 times that of the average sedan, so trucks take more distance to stop.
- ◆ 2. 'DO NOT OVERTAKE TURNING VEHICLE' sign on the rear of vehicles over 7.5 metres in length allows them to legally turn from the second or even the third lane as needed to safely get round a corner.
- ◆ 3. Don't increase your speed while being passed by a truck.
- ◆ 4. Speed limiting means no engine power above 100 km/h: gravity can push them faster downhill but has the opposite effect going uphill.
- ◆ 5. Road courtesy and a bit of patience may save your life but it could also prevent road rage.
- ◆ 6. Do not travel right on the centre line. If stopped or broken down, where possible park well clear of the roadway and use hazard lights to be able to be seen safely.
- ◆ 7. Dip high-beams before reaching a crest or curve. Dip early when behind trucks and when overtaking, don't move to high beam until past the truck's mirrors. Check headlight alignment regularly, particularly if loaded up on long trips, and only use fog lights in fog.
- ◆ 8. Caravans: When being overtaken, maintain speed and position, only slow when the truck has moved out to pass. Quality mirrors, towing hitches and good advice are priceless. A CB or UHF radio can also be worthwhile.
- ◆ 9. For safe overtaking: Stay back until you can see the road ahead clearly. Pass quickly but sensibly. Don't pull back in until you see both headlights. Maintain your speed.
- ◆ 10. Roundabouts: Larger trucks often need all of the roadway and will aim to maintain momentum to avoid a much slower start and movement through, which can often further delay or stop all traffic.
- ◆

MOTORBIKE CRASHES



FACTS ABOUT MOTORBIKES

- So you finally have the itch to try your hand at riding a motorcycle. You've seen racing on TV, you've seen a lot of motorcycle riders in your area, and you want to get in on the fun. Everyone is always smiling when they are riding... how hard can it be?
- While it all seems like innocent fun, the truth is, motorcycling can be very dangerous. In 2016, 5,286 motorcyclists were killed while riding. Within the last seven years, there has been an average of 4,200 motorcyclist fatalities a year. The causes range from drinking alcohol before riding, not wearing a helmet and unfortunate interactions with other motorists.

SOME PICTURES OF TRUCKS



THANK YOU FOR YOUR TIME AND
DRIVE SAFELY

